

MASON'S TIP # 8

Quick Install: Arriscraft Sill vs. Rowlock Brick

An Arriscraft sill is a simple and cost-effective way to accent any window, while effectively directing moisture away from window areas.

ARRISCRAFT SILL



1. Apply Mortar.



2. Insert Sill; repeat as required depending on window size (2 sills for this example).



3. After final sill is in place, brush excess mortar from the stone surfaces utilizing steel and soft fibre brushes.



4. This example was completed in 1/3 of the time required to build a rowlock sill.

ROWLOCK CONSTRUCTION



Traditional rowlock installation requires multiple steps:

1. Apply Mortar



2. Cut, place and position multiple bricks.



3. Repeat steps 1 and 2 until sill is complete (15 times for this example).



4. Repeatedly check level, and re-position where required;



5. Tool multiple mortar joints (13 this example), and then brush excess mortar from bricks.



6. This example took 3 times longer to complete than the Arriscraft sill.

Questions? Call 1-800-265-8123
and ask to speak with our Technical Services Department.

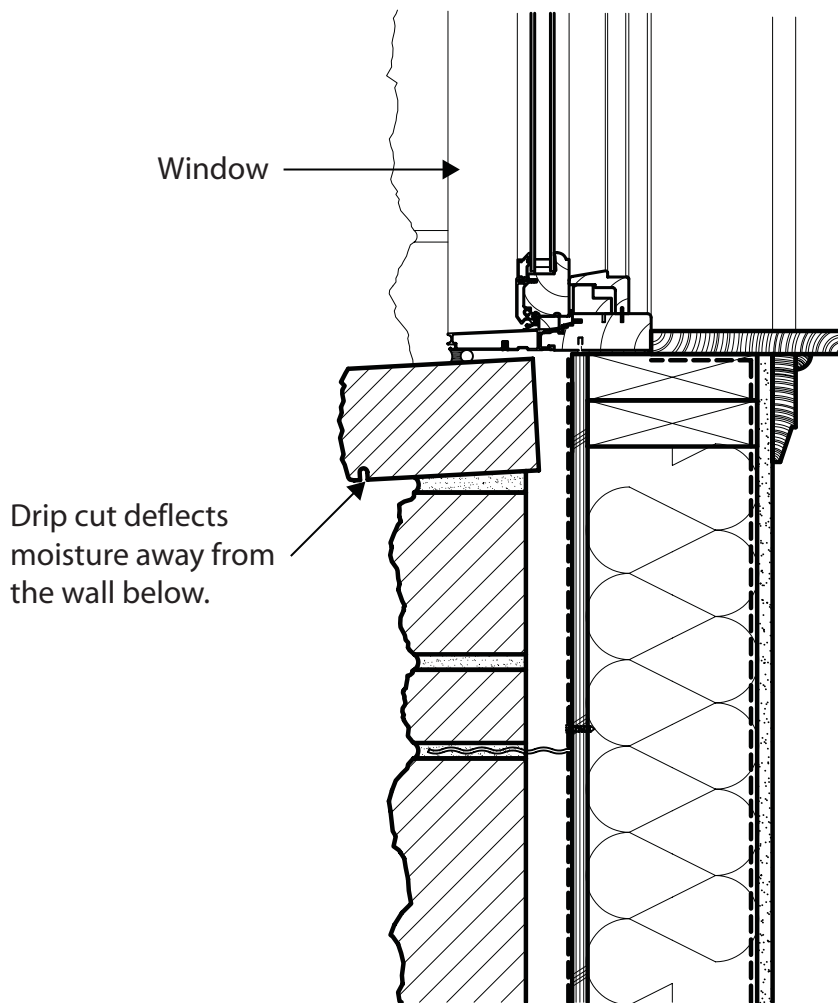


ARRISCRAFT[™]
INTERNATIONAL
BUILDING STONE • BRICK • LIMESTONE

MASON'S TIP # 8

Quick Install: Arriscraft Sill vs. Rowlock Brick

Arriscraft Window Sill



Arriscraft Sills Add Benefits

- Enhanced curb appeal of home
- Reduced builder call backs for water problems
- Speed of installation is greatly increased for mason
- Fewer mortar joints mean reduced possibility of leaks
- Reduced efflorescence in brick under window

The moisture shedding characteristics of a well-designed and constructed window sill provide enhanced protection to your home against the elements.

Questions? Call 1-800-265-8123
and ask to speak with our Technical Services Department.



ARRISCRAFT[™]
INTERNATIONAL
BUILDING STONE • BRICK • LIMESTONE