

# AT-GRADE DESIGN IDEAS



**All masonry products are inherently absorptive, a necessary property for the formation of a mortar bond. This tendency to absorb moisture, however, also means that moisture from other sources, such as topsoil, melted ice and snow, etc., will also be absorbed into the masonry, which may cause staining over time.**

Raising the masonry above grade, incorporating a mowing strip, an Adair® Limestone starter course, or a protection board impervious to moisture, are all preventative measures which will prolong the life and beauty of Arriscraft masonry when used at grade.

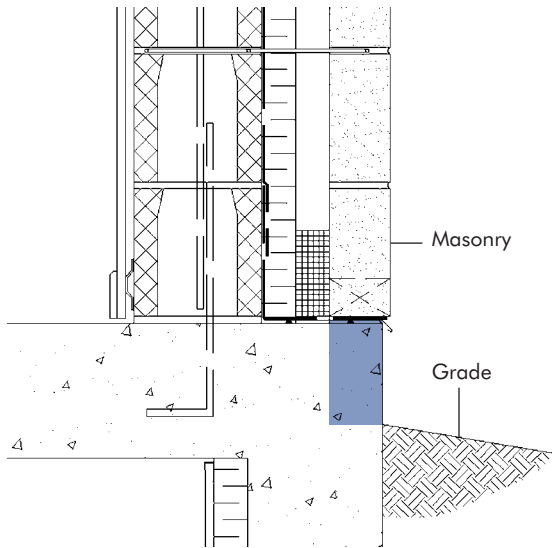


**ARRISCRAFT™**  
INTERNATIONAL  
BUILDING STONE • BRICK • LIMESTONE

## Raise Masonry Above Grade

# Raise Masonry

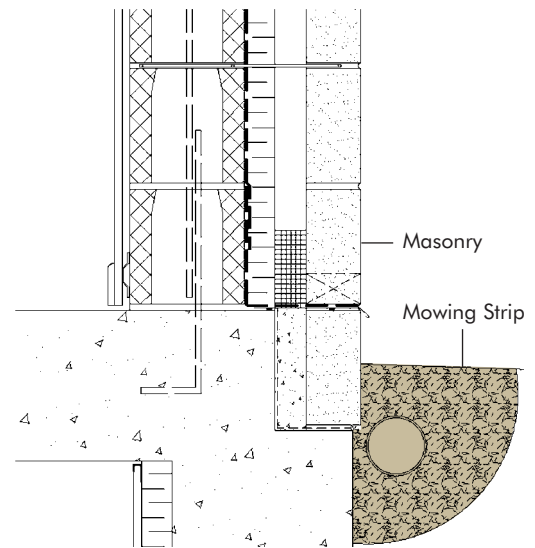
Raising the masonry above grade will prevent moisture sources from coming into direct contact with the masonry.



## Incorporate a Mowing Strip

# Mowing Strip

Incorporating a mowing strip of clear draining granular material will protect against moisture accumulation by allowing a clear path for moisture drainage away from the masonry.



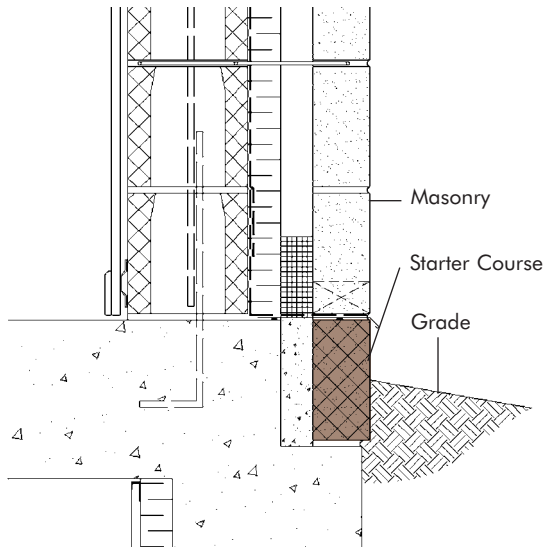
Masonry raised above grade



Mowing strip application

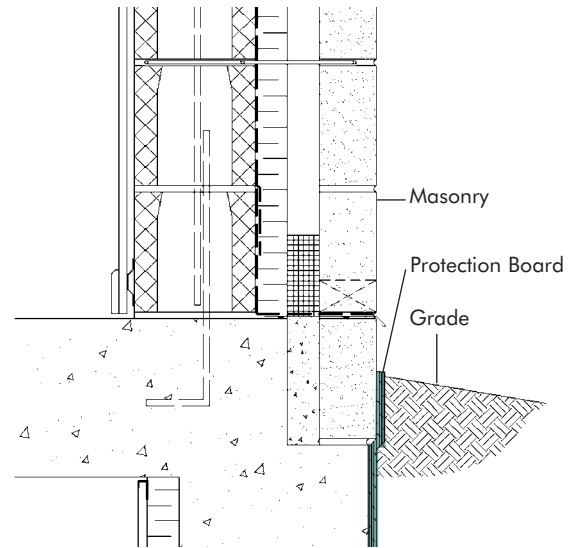
## Incorporate an Adair® Limestone Starter Course

Installing a starter course of Adair® dolomite will maintain the aesthetic integrity of the masonry. Its greater density and lower absorption is ideally suited to resist the conditions at grade.



## Protect Masonry With Moisture-Impervious Protection Board

Incorporating a protection board that is moisture-impervious will protect the masonry from saturation. This method is virtually invisible.

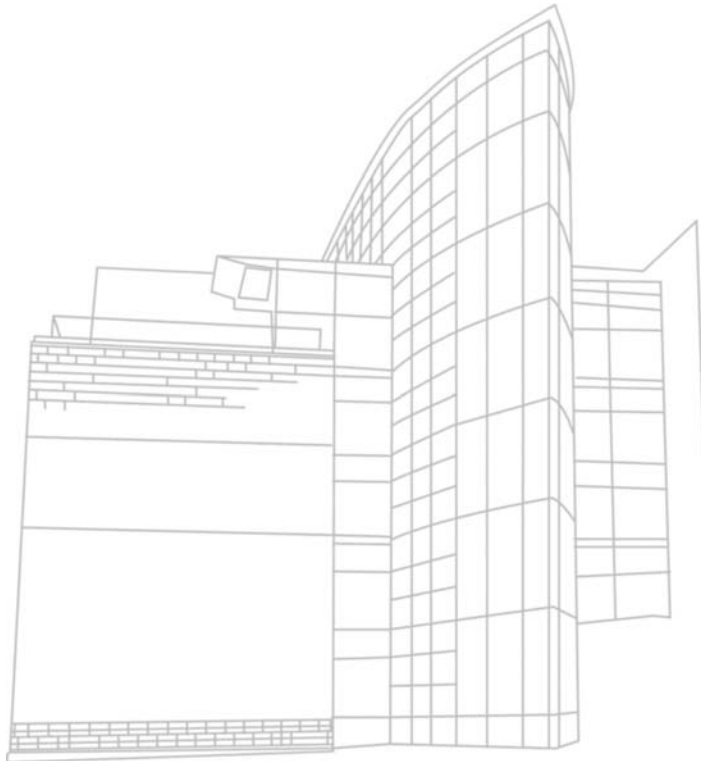


Adair® Limestone starter course



Moisture-impervious material

# AT-GRADE DESIGN IDEAS



**ARRISCRAFT™**  
INTERNATIONAL  
BUILDING STONE • BRICK • LIMESTONE

P.O. Box 3190, 875 Speedsville Road  
Cambridge, Ontario, Canada N3H 4S8  
North America: 1-800-265-8123  
Worldwide: 01-519-653-3275 Fax: 519-653-1337  
techservices@arriscraft.com www.arriscraft.com